

DSR-12/20 DSRT-20  
GENERAL INFORMATION  
EXPLODED VIEWS - PARTS LISTS

ENGLISH

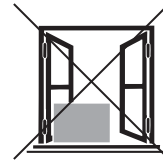
Attention! 3 minutes delay on all units with 'Alfa-14' controller. When starting or restarting the unit, it will take 3 minutes before the compressor and the fan will start running.

Achtung! Wenn Sie das Gerät (wieder) in Betrieb setzen, wird bei allen Geräten, die mit einem Zeitschaltuhr 'Alfa-14' ausgestattet sind, der Anlauf des Kompressors und der des Ventilators um 3 Minuten verzögert.

Attention! Quand vous mettez ou remettez votre appareil en fonctionnement, le compresseur et le ventilateur de tous les appareils équipés d'une horloge électronique 'Alfa-14' commencent à fonctionner après 3 minutes.

Attentie! Wanneer u het apparaat wilt (her)starten en het apparaat is uitgevoerd met een 'Alfa-14' tijdschakelaar, dan duurt het 3 minuten voordat compressor en ventilator starten.

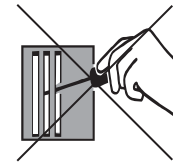
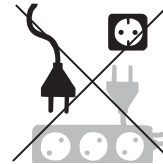
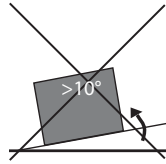




## SAFETY

For safety reasons, read this information carefully before operating. Persons who are not familiar with this type of product must not use it. We strongly recommend keeping this information in a safe place for future reference.

This appliance must be earthed. The unit is designated for indoor operation.



Refer to the rating plate for voltage and power input. The installation must be in accordance with regulations of the country where the installation is performed. The minimum distance between air inlet(s) and/or air outlet(s) and any object must be 40 cm.

- \* The unit is safe. It has been approved by many safety institutions around the world. However, as with other electrical appliance, use it with care.
- \* Keep out of reach of children.
- \* Do not clean the unit by spraying it or immersing it in water.

- \* Do not insert any object into an opening of the unit.
- \* Disconnect from the mains before cleaning the unit or any of its components.
- \* Never connect to an electrical outlet using an extension cord. If an outlet is not available, one should be installed by a licenced electrician.
- \* Any service other than regular cleaning or filter replacement should be performed by an authorized service representative. Failure to do so could result in a loss of warranty.
- \* When the unit is placed in a (swimming) pool, connect to the mains via a transformer or a breaking switch, conform the regulations regarding electrical installations.

## AMCOR DEHUMIDIFIERS

You can't control humidity and haze outdoors. But in an indoor swimming pool and other humid interior spaces where hot stuffy air, steamy windows and walls are frequent phenomena, you can. That's why you need Amcor.

Amcor's dehumidifiers clear the air in damp interior spaces.

Condensation is removed from windows, walls and ceilings.

Vaporous stuffy air is drawn off, clean air is pumped back in.

You simply set the dial and the air humidity remains at the required level.

And, the Amcor dehumidifier is an energy saver.

Water evaporating from a swimming pool, bathroom, archive, store or from wet objects and surfaces increases the humidity of the air and creates the hazy and stuffy air often found in the hall.

At the same time water condenses on the cooler parts in the hall: windows, walls, ceilings, etc.

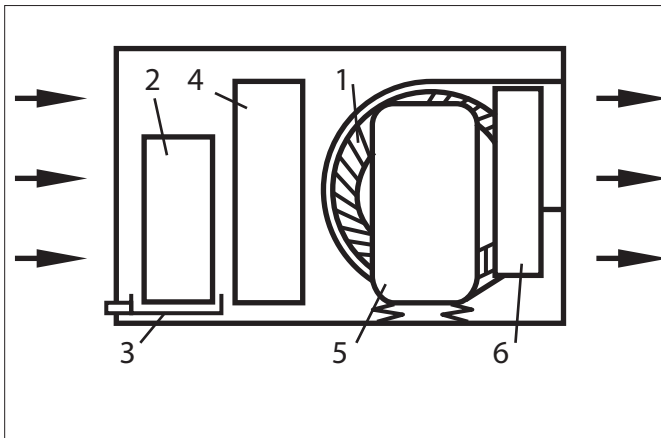
Water condensation is not only an aesthetic defect, it can, in the long run, cause structural damage.

There are two methods for drying the air in humid spaces:

- by ventilation,
- by heat pumps.

The Amcor dehumidifier is designed as a heat pump and has, through energy saving, a considerable advantage over a ventilation system.

## HOW THE "AMCOR" DEHUMIDIFIER WORKS



The fan (1) sucks the humid air through the evaporator (2). There the air is cooled and the moisture in the air condenses into water. This water is collected in the tray (3) and drained away through the sump and piping. The compressor (5) pumps the heat, which has been extracted from the air, into the condensor (6). There, this heat is once again released, and absorbed by the dry air. The ready wired control box monitors and controls the operation.

## ELECTRICAL WIRING

The unit can be supplied with a cord and an earthed plug. If it ever becomes necessary to replace this plug, be sure to use an earthed plug suitable for the power supply in your area and conform your national safety standard. The wires of the cable are coloured in accordance with the standard electrical code.

Blue	Neutral
Brown	Live
Green/Yellow	Earth

The blue (neutral) wire should be connected to the terminal in the plug marked N or coloured black.

The brown (live) wire should be connected to the terminal in the plug marked L or coloured red.

The green/yellow (earth) wire should be connected to the terminal in the plug marked E or coloured green or marked with this symbol:



The unit must be connected to the power supply with the appropriate leads.

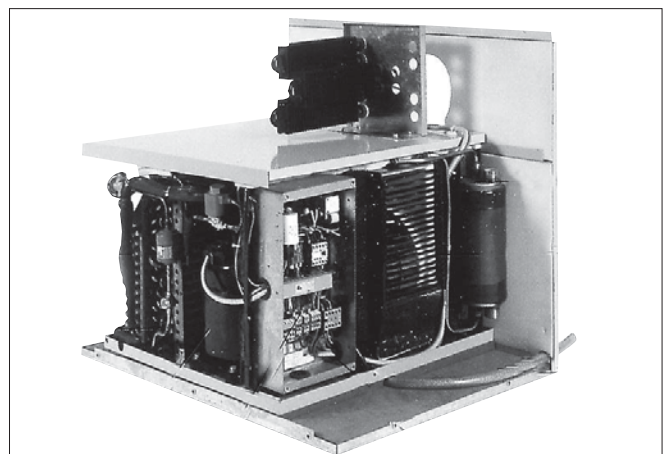
The cord should pass through holes with rubber grommets.

Properly fused disconnect switches must be installed between the unit and the power source.

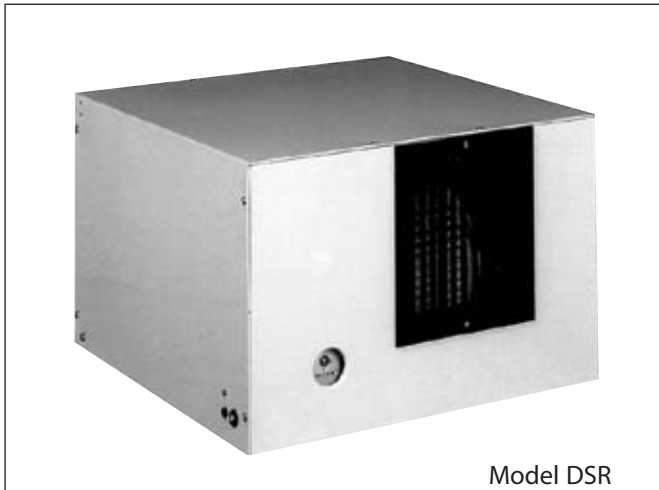
The unit must be wired with an isolation (mains) switch accessible from outside the wet area in which the unit is installed, to comply with IEE regulations.

## MAINTENANCE

The appliance is actually maintenance free, except in cases of soiling. In this case the filter has to be cleaned.



## AMCOR INDOOR SWIMMING POOL ROOM DEHUMIDIFIERS



Model DSR

The Amcor pool dehumidifier is a ready to install, transportable, appliance. It can be mounted on a wall or ceiling console in the pool room or even over a shower booth. It may be mounted in adjoining rooms and connected by ducts to the pool room.

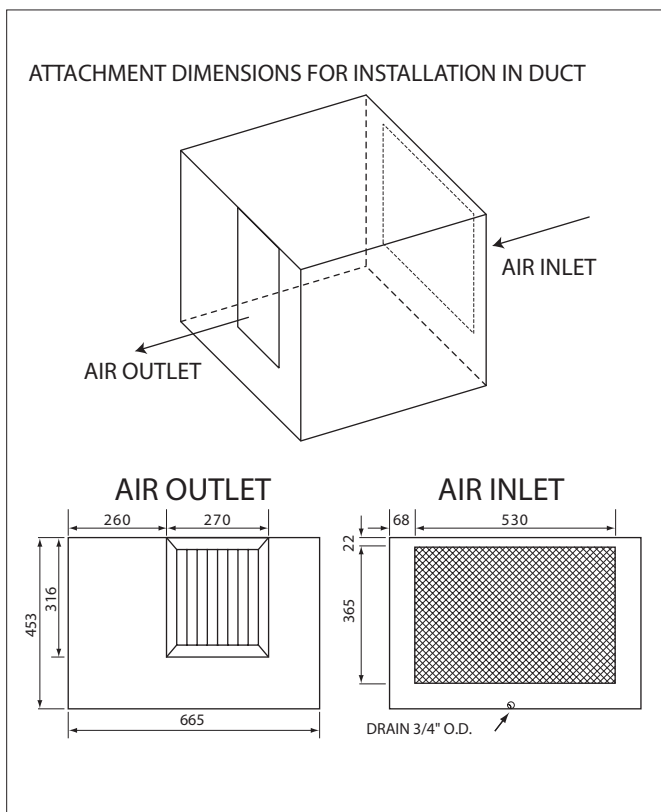
Amcor has not adapted normal room air-conditioners for use in indoor swimming pools, but has developed pool dehumidifiers particularly for this purpose. The compressor therefore matches exactly the capacity of the evaporator, thus achieving the optimal balance between efficiency and power consumption. The pool dehumidifier is controlled by a humidistat which operates at a low (=safety) voltage of 24V.

The relative humidity in an indoor swimming pool can be adjusted between 50-80% when an external hygostat is used.

## INSTALLING THE AMCOR MODEL DSR/DSRT

The minimum distance between inlet(s) and/or outlet(s) and any object must be 40 cm. Installation of the dehumidifier is easy, as the unit is built on a base and slides out of the housing. The individual parts are logically arranged and can be inspected. First, remove the screws of the frame with louvers. Remove the screws on the base. Now the unit can be taken out the housing.

Prepare a suitable console and mount it on the wall. Mount the housing on the console and attach it by fastening its base with screws to the legs (which should preferably be lagged with a vibration dampening material). Insert the unit into the housing, fasten the housing to the base and attach the louvered frame in front of the housing. Attach a 3/4" I.D. flexible pipe to the drain nipple located at the back of the dehumidifier.



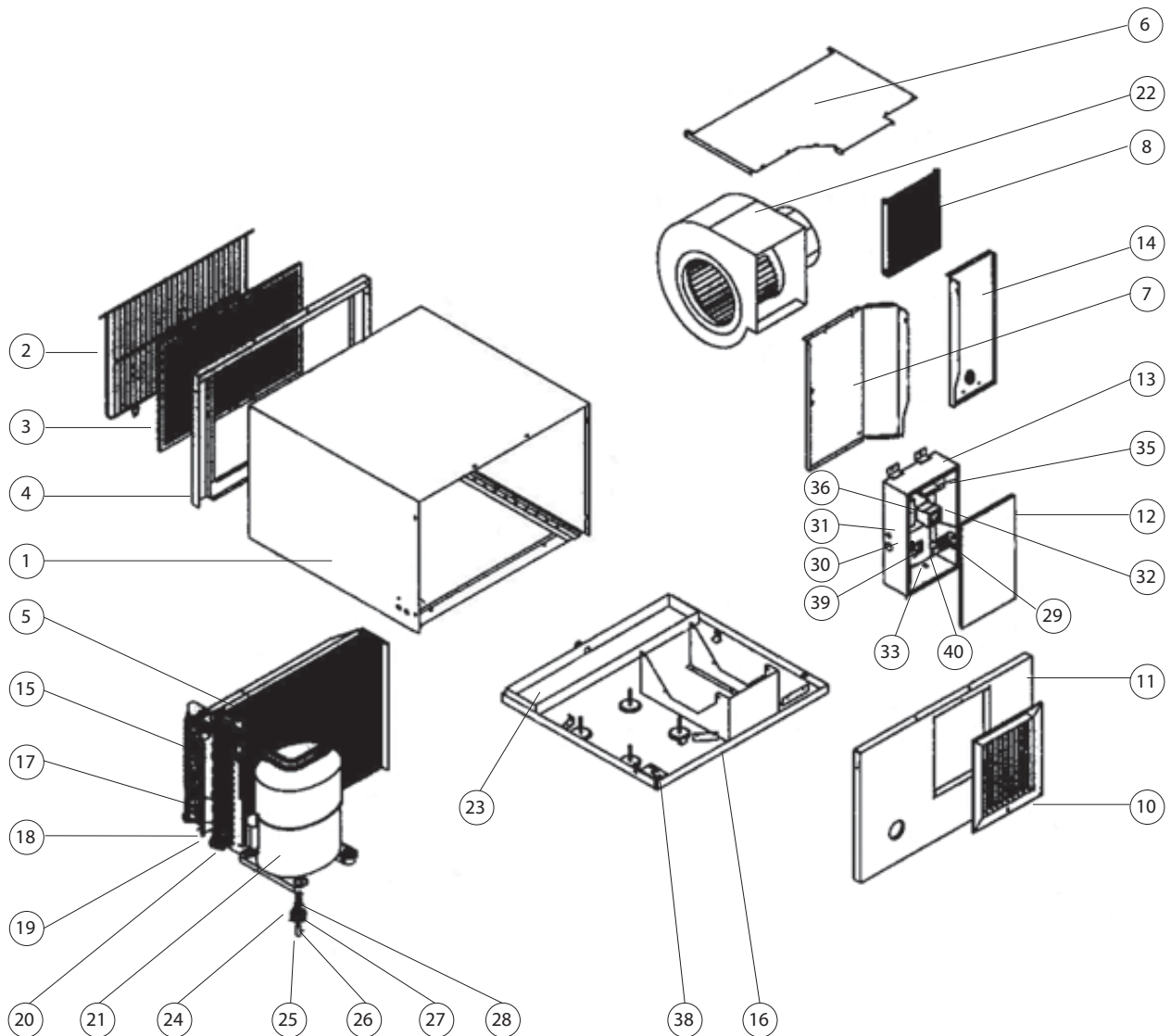
## MAINTENANCE DSR-12/20

The appliance is actually maintenance free, except in cases of soiling. In this case the filter has to be cleaned. To take the filter out, unscrew 2 screws fastening the filter grid, located at the back. Swing the grid towards you and up in order to get access to the filter. Remove the filter. Hold it under a water tap and flush it clean with a stream of water. Let the trapped water drip off the filter fabric and replace the dried filter in reverse order.

## OPERATING RANGE DSR-12/20

Max. working temperature 35 °C  
 Min. working temperature 5 °C  
 Relative humidity 40-100%

EXPLODED VIEWS / DSR-12/20



TECHNICAL SPECIFICATIONS / DSR-12/20 AND DSRT-20

MODEL	12 DSR	20 DSR	20 DSRT
ELECTRICAL SUPPLY	230 V	230 V	380 V (3phase)
FREQUENCY	50 Hz	50 Hz	50 Hz
MOISTURE REMOVAL AT 30 °C 65-75% R.H.	2.7-3.6 l/h	4.5-5.6 l/h	4.5-5.6 l/h
POWER CONSUMPTION	1300 W	2600 W	2600 W
CURRENT	6.0 A	12.0 A	3X4 A
REFRIGERANT	R407C (or R22)	R407C (or R22)	R407C (or R22)
REFRIGERANT CHARGE	1300 g	1650 g	1650 g
AIR DELIVERY MAX.	1300 m <sup>3</sup> /h	1500 m <sup>3</sup> /h	1500 m <sup>3</sup> /h
FAN SPEED	2	2	2
SWIMMING POOL SURFACE	35 m <sup>2</sup>	50 m <sup>2</sup>	50 m <sup>2</sup>
NET WEIGHT	68 kg	78 kg	78 kg
LENGTH	680 mm	680 mm	680 mm
WIDTH	665 mm	665 mm	665 mm
HEIGHT	453 mm	453 mm	453 mm

## PARTSLIST / DSR-12/20

PART NO.	QTY.	PART NAME	NO.
A436844	1	CASING	1
468038	1	GRID	2
A436536	1	AIR-FILTER	3
A436334	1	FRAME	4
A434632	1	EVAPORATOR DSR-12	5
A434642	1	EVAPORATOR DSR-20	
A414305	1	TOP COVER	6
A342695	1	WALL RIGHT	7
A528644	1	LOUVERS (IN)	8
508002	2	CLAMP	9
68038	1	LOUVERS (OUT)	10
A436324	1	FRONT	11
A434664	1	COVER -CONTROL BOARD	12
A492474	1	CONTROL BOARD	13
A342705	1	WALL LEFT	14
A434276	1	CAPILARY DSR-12	15
A434576	1	CAPILARY DSR-20	
A326504	1	CHASSIS	16
292026	1	STRAINER - DISTRIBUTOR	17
A342725	1	LEFT BULKHEAD	18
X1002110542	1	EVAPORATOR DSR-12	19
X1003140542	1	EVAPORATOR DSR-20	
X1003190562	1	CONDENSER DSR-12	20
X1004190562	1	CONDENSER DSR-20	
274312	1	COMPRESSOR DSR-12	21
274314	1	COMPRESSOR DSR-20-1PH	
271317	1	COMPRESSOR DSR-20-3PH	
271283	1	FAN MOTOR+HOUSING DSR-12	22
271284	1	FAN MOTOR+HOUSING DSR-20	
A328675	1	DRAIN PAN	23
DEPEND OF COMP.		RUBBER GROMMET	24
DEPEND OF COMP.		SLEEVE	25
O81071		WASHER	26
O81075		SPRING WASHER	27
OO4025		NUT	28
295060	1	LEVER SWITCH	29
294012	6	GROMMET	30
294010	4	GROMMET	31
DEPEND OF COMP.		CAPACITOR - COMPRESSOR	32
275031-34		TERMINAL	33
429171		CONTACTOR DSR-3PH	34
482301	1	TRANSFORMER	35
386117	1	DEFROST CONTROL	36
346518		SEAL FOAM STRIP	37
508027	2	LINE CORD CLIP	38
326101	1	FUSE 1A	39
275016	1	TERMINAL FUSE	40

**MOISTURE REMOVAL / DSR-12**

“AMCOR” DSR 12 - MOISTURE REMOVAL AT DIFFERENT ROOM TEMP. EN R.H.% (kg water/24h)

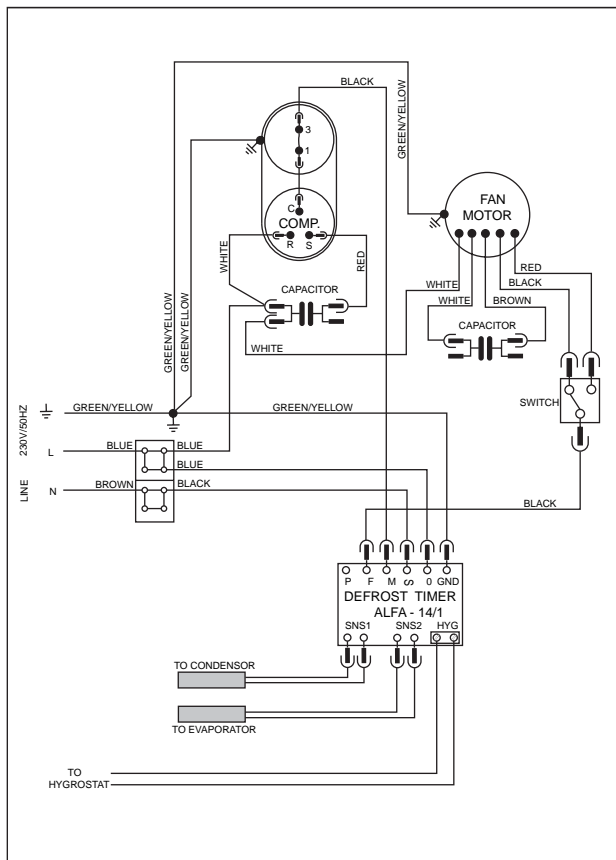
ROOM TEMP. °C	RELATIVE HUMIDITY %							
	85	80	75	70	65	60	55	50
15	41	37	34	31	28	25	23	17
20	57	52	48	43	38	34	30	27
24	73	66	60	55	49	43	39	34
25	77	70	63	58	51	46	41	36
26	80	73	67	60	54	48	43	38
27	84	77	70	63	56	50	45	40
28	88	80	73	66	59	52	47	42
29	92	84	76	69	62	55	49	43
30	96	87	79	72	64	57	51	45
32	100	91	82	75	67	59	53	47
35	104	94	86	78	69	62	55	49

**MOISTURE REMOVAL / DSR-20, DSRT-20**

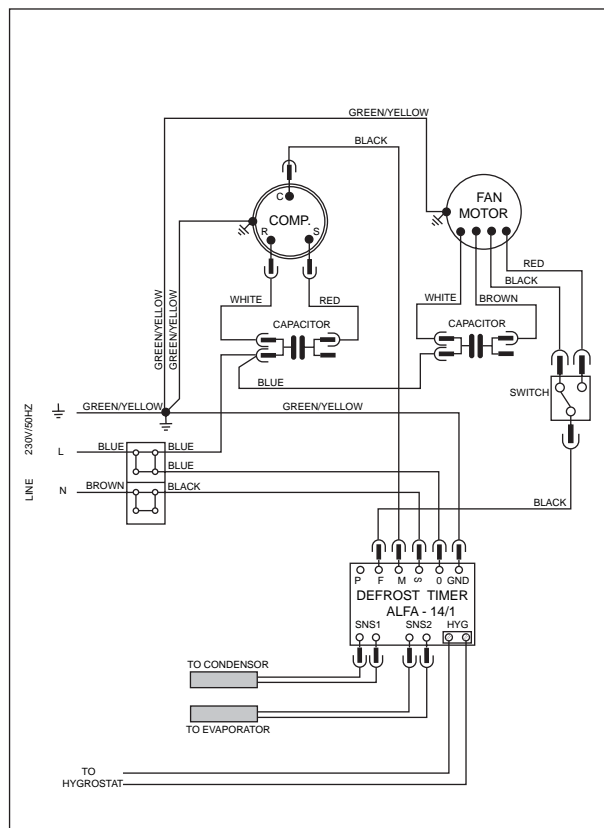
“AMCOR” DSR 20 - MOISTURE REMOVAL AT DIFFERENT ROOM TEMP. EN R.H.% (kg water/24h)

ROOM TEMP. °C	RELATIVE HUMIDITY %							
	85	80	75	70	65	60	55	50
15	69	62	57	52	46	41	23	17
20	96	87	79	72	64	57	51	45
24	121	110	100	91	81	72	64	57
25	128	116	106	96	85	76	68	60
26	134	122	111	101	90	80	71	63
27	141	128	116	106	94	84	74	66
28	147	134	121	110	98	87	78	69
29	153	139	127	115	103	91	81	72
30	160	145	132	120	107	95	85	75
32	166	151	137	125	111	99	88	78
35	173	157	143	130	116	103	92	82

## WIRING DIAGRAM / DSR-12

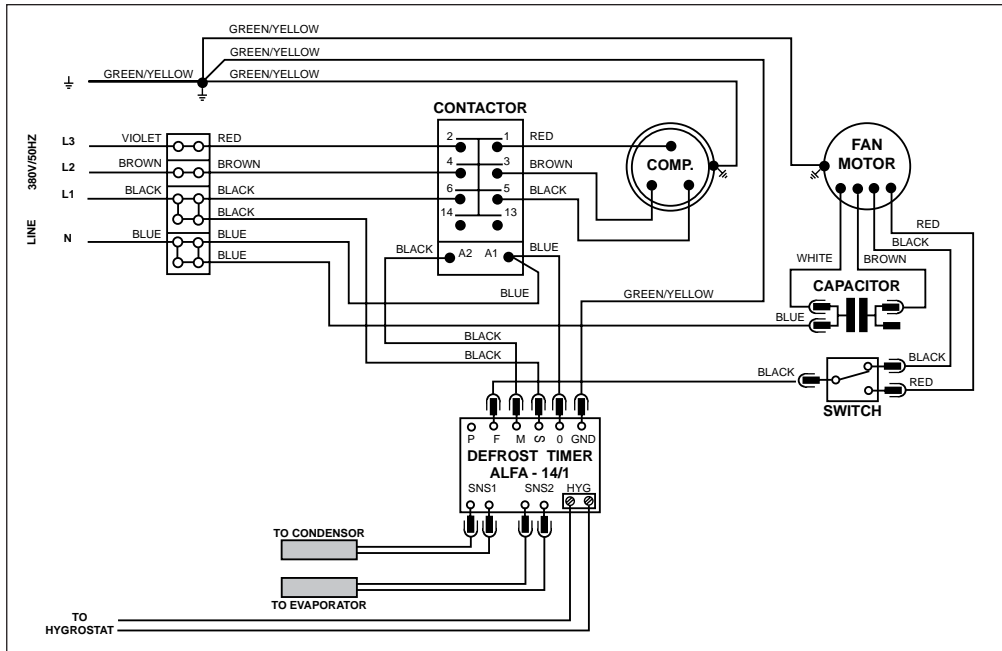


## WIRING DIAGRAM / DSR-20





# WIRING DIAGRAM / DSRT-20



Dealers Adress: